



GRANADA

Metal Storage





GRANADA

Metal Storage





ITEM CODE	A2DLFC	A3DLFC
Description	2 Drawers Lateral Filing Cabinet	3 Drawers Lateral Filing Cabinet
Dimension	W.910 - D.460 - 710 mm	W.910 - D.460 - 1010 mm
Features	Full Extention Drawer; Anti - Tipping Mechanism	



A2DRFFCSH



A3DRFFCSH



A4DRFFCSH



FASTENER FREE



MULTI FOLDING
STRUCTURE



ANTI TIPPING

A2DRFFCSH	A3DRFFCSH	A4DRFFCSH
2 Drawers Filing Cabinet	3 Drawers Filing Cabinet	4 Drawers Filing Cabinet
W.464 - D.620 - 710 mm	W.464 - D.620 - 1010 mm	W.464 - D.620 - 1320 mm
Full Extention Drawer; Anti - Tipping Mechanism		



LOCKER

CUPBOARD

RACKING



AISL2



AISL3



AISL4



AISL6



AFSLDG



AST1



AST3



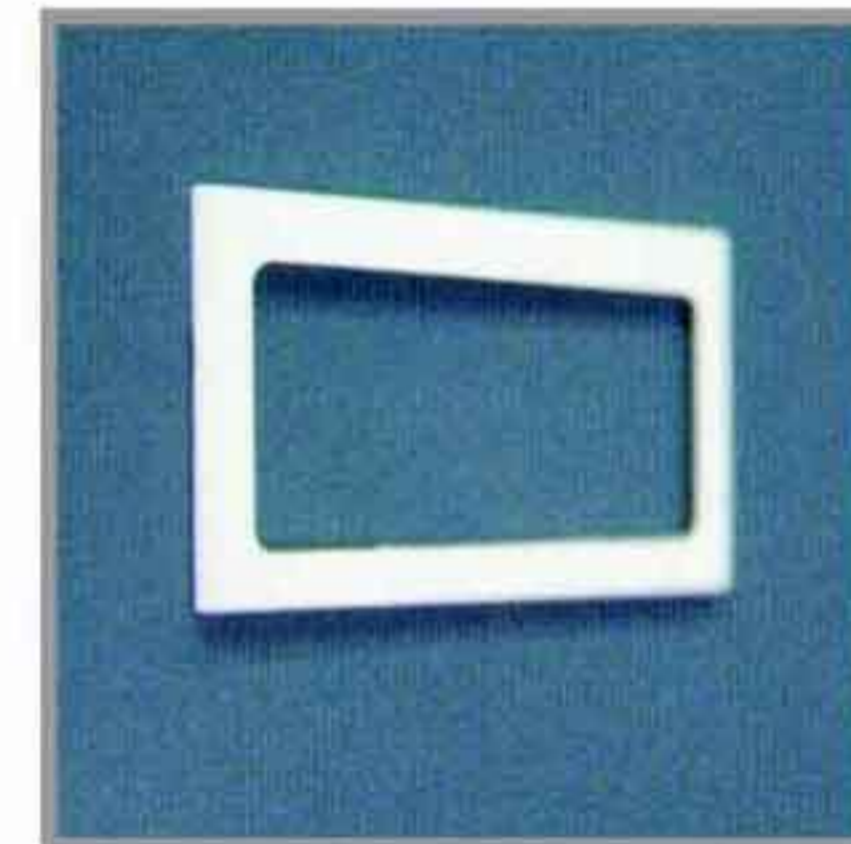
ASAR



ITEM CODE	AISL2	AISL3	AISL4	AISL6	AFSLDG	AST1	AST3	ASAR
Description	2 Compartments Locker	3 Compartments Locker	4 Compartments Locker	6 Compartments Locker	Cupboard Glass Sliding Door	Swing Door Cupboard		Slotted Angle Rack
Dimension	W.380 - D.457 - 1830 mm				W.914 - D.465 - 1830 mm	W.914 - D.465 - 914 mm	W.914 - D.465 - 1830 mm	W.914 - D.457 - 2000 mm
Features	Hanging Rod; Louvers and Card Holder		Louvers and Card Holder		3 Shelves	1 Shelve	3 Shelves	3 Shelves



F E A T U R E S



Name Tag Holder



Adjustable Foot Cap



Spacious &
Safe Platform



Smooth Anti-Tilt
Mechanism

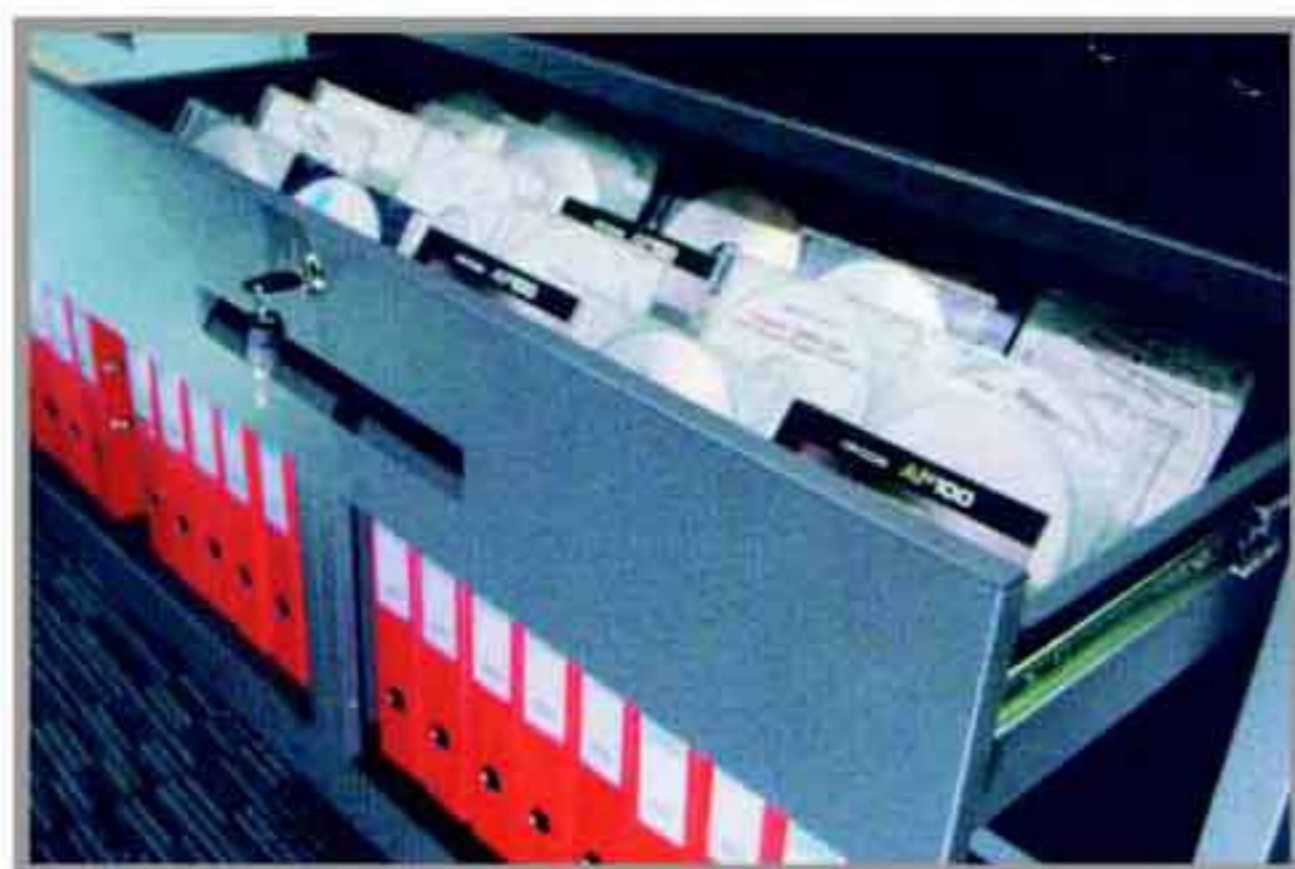


Strong & Slick
Steel Handle



Central
Locking System

**MOBILE
COMPACTOR**



Lateral Drawer



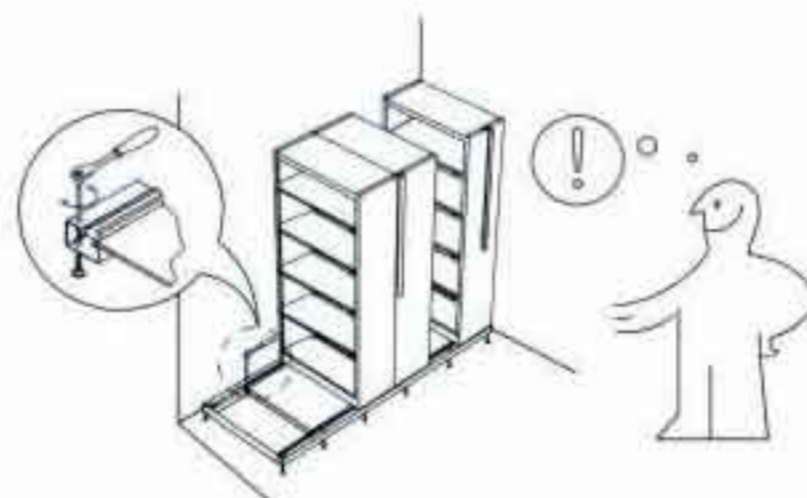
Lateral Frame
(for A4/A3 File Storage)



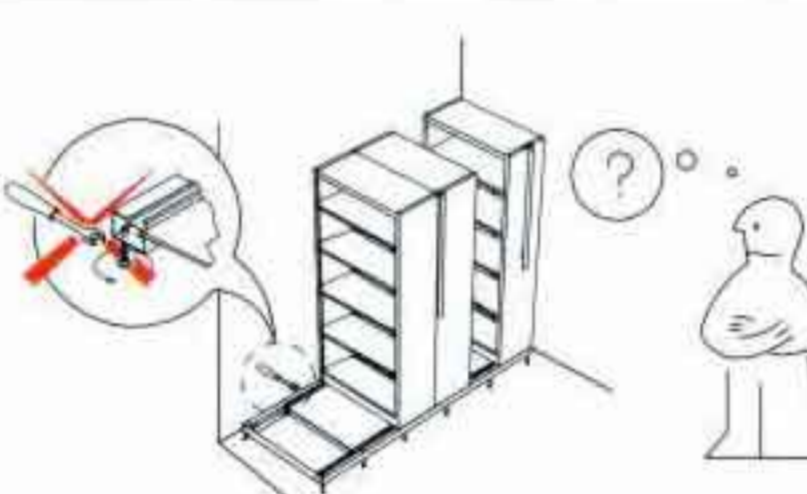
Multi-Purpose Shelf

GRANADA Mobile Compactor

Ease to access leveling Technology



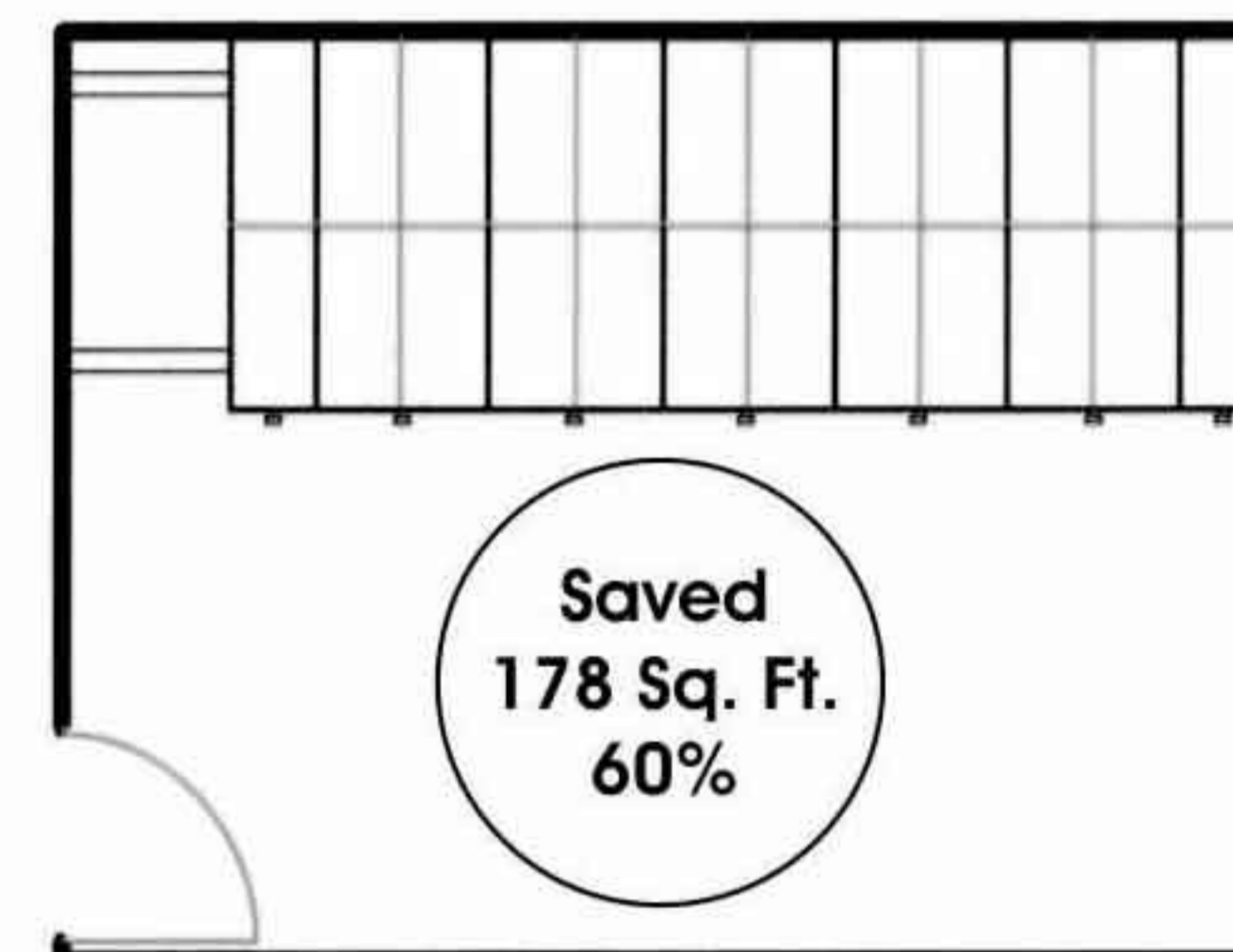
Top Adjustable



Side Adjustable

Other's Mobile Compactor

24 pcs Full Height Cupboard
288 Sq. Ft.



**Saved
178 Sq. Ft.
60%**

Granada Mobile Compactor
24 Bays 110 Sq. Ft.

Types	4 Bay Single Column					4 Bay Double Column				
Models	MCH4BS	MCH6BS	MCH8BS	MCH10BS	MCH12BS	MCH4BD	MCH6BD	MCH8BD	MCH10BD	MCH12BD
Description	4 Bay Single Column	6 Bay Single Column	8 Bay Single Column	10 Bay Single Column	12 Bay Single Column	4 Bay Double Column	6 Bay Double Column	8 Bay Double Column	10 Bay Double Column	12 Bay Double Column
Dimension (Length)	2430mm	3250mm	4070mm	4890mm	5710mm	2430mm	3250mm	4070mm	4890mm	5710mm
Net Weight	258kg	372kg	486kg	600kg	714kg	453kg	672kg	891kg	1110kg	1329kg
Material	Cold Rolled Steel									
Finish	Epoxy Powder Coating									
Shelf Size	W910 x D368 x H25 mm									
No of Shelf	4 Pieces per Column									
Loading Per Shelf	40kg per Pieces									
Aisle Size	790mm									
Anti Tilt Mechanism	Nylon Guide D40 mm									
Material Thickness	Base : 1mm		Back Panel : 0.7mm		Rail : 3mm		Platform : 19mm Chipboard			
	Top Panel : 0.8mm		Side Panel : 0.8mm		Shelf : 0.7mm					
Rail	Made of 3mm Cold Rolled Steel Using Laser Cut Process and with Adjustable Foot Cap									
Wheel	D60mm Bearing with Nylon Coating					Loading : 150kg / Wheel				
Movement	Left / Right									

